

STREET LIGHT CONTROLLER PANEL

SLC – 1Ph and 3Ph

GPRS / 4G / RF Mesh Router

Inbuilt GPS



schnell

+91 95002 95005

schnell@schnellenergy.com

www.schnellenergy.com

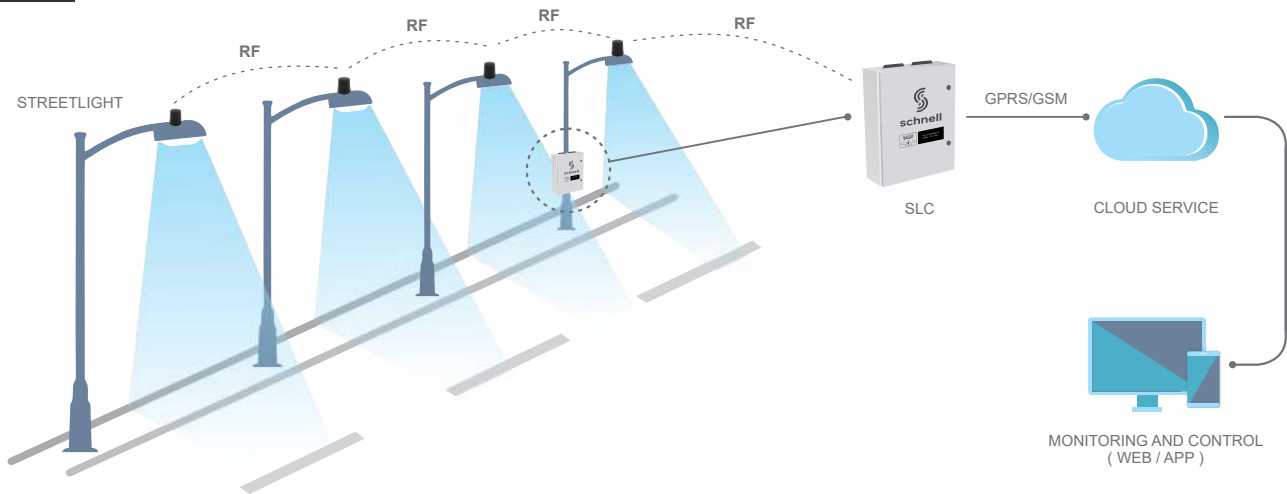
Schnell Energy Equipments Pvt.Ltd,
6/4, Lions Club Building, Ranganayaki Nagar,
Periyanaickenpalayam, Coimbatore - 641 020.



SMART STREET LIGHTING

Schnell SMART system for street lighting is designed to gain complete control over the operation, monitoring and sophisticated maintenance of group of street lights or individual streetlight.

SLC system architecture



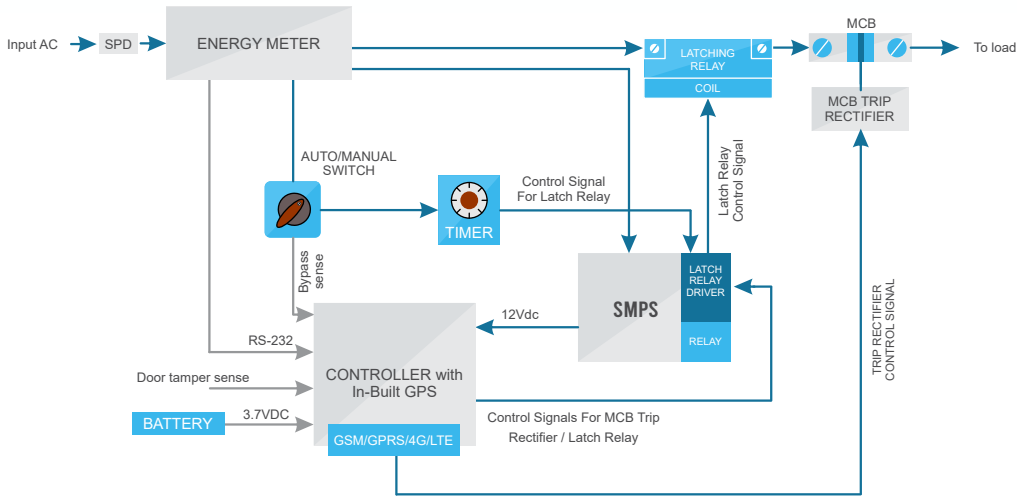
STREET LIGHT CONTROLLER (SLC)

Street Light Controller (SLC) is a control panel providing a comprehensive solution for protection, control and monitoring the group of street lights or individual street light. It consists a Gateway system which will communicate to the SMART web server with GSM/GPRS/4G/LTE connection. Gateway system also controls the panel functionality. Panel has a class 1.0 energy metering unit to measure the energy consumption. Panel has an in-built GPS system for the ease of location traceability.

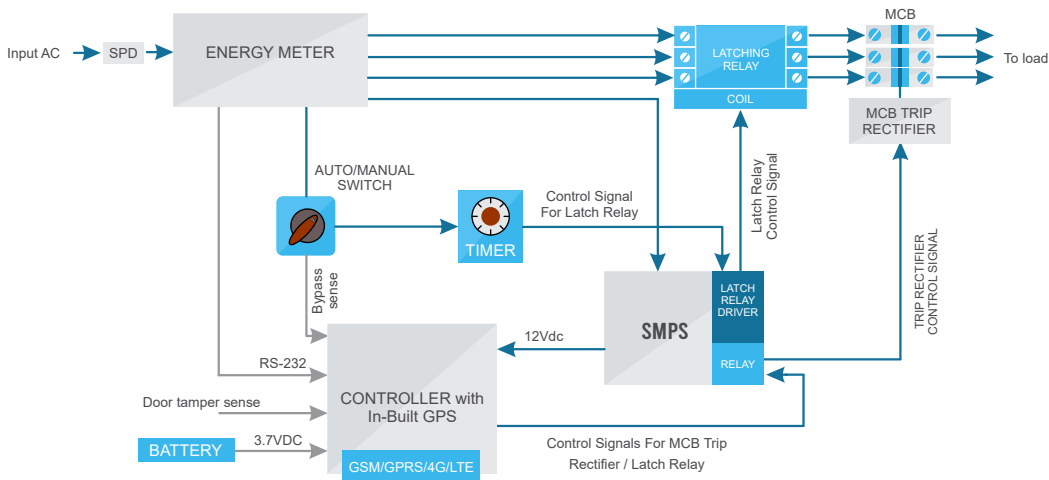
SALIENT FEATURES

- ◆ Protection for Over voltage, Under voltage, Over load, Short circuit
- ◆ Wide input operating voltage with in-built surge protection (40kA)
- ◆ In-built GPS
- ◆ Records and communicates power failure, energy saving, live panel status and other electrical parameters with event notification for faults
- ◆ Control & Monitor through Web & Mobile applications
- ◆ OTA (Over-The-Air) firmware update
- ◆ Electrically controlled mechanism for auto rectification of nuisance MCB Trips
- ◆ By pass function

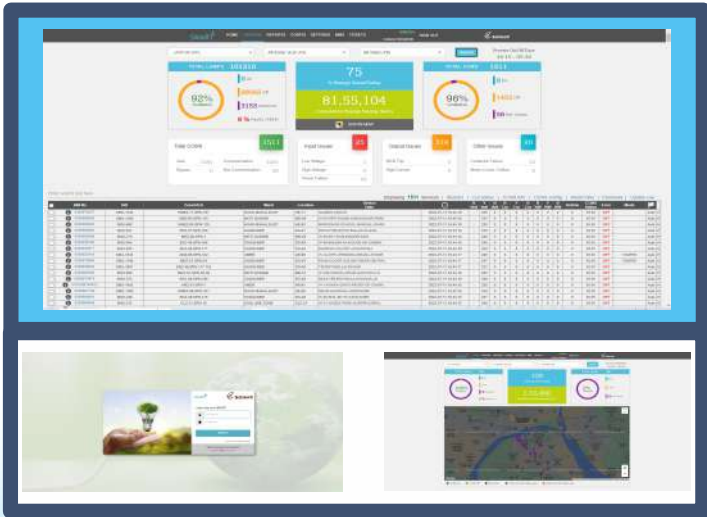
STREETLIGHT CONTROLLER - TYPICAL LINE DIAGRAM - LATCH RELAY MODEL [1 PHASE]



STREETLIGHT CONTROLLER - TYPICAL LINE DIAGRAM - LATCH RELAY MODEL [3 PHASE]



CCMS SOFTWARE



COMPLIANCE TEST REPORTS

- IEC 61000-4-4:2012
- IEC 61000-4-5:2014
- IEC 61000-4-11:2020
- CISPR 11:2015
- IEC 61000-4-6:2013
- IEC 60068-2-30

TECHNICAL SPECIFICATIONS

Operating voltage range	:	185 VAC to 275 VAC, 50Hz/60Hz
Operating frequency	:	50Hz
Lamp type	:	LED
Connection type	:	1 Phase [2 wire] & 3 Phase [4 wire] [panel earthing to be done separately]
Maximum load handling capacity	:	3kVA/4kVA/7kVA/15kVA in 1 Phase 7kVA/Ph in 3 Phase
Operation mode	:	ON / OFF
Surge protection	:	CAT B [6 kV / 3 kA] [Internal Surge Protection for Electronics] CAT C [In =20kA , I _{max} = 40kA]
Metering	:	1Ph Class 1.0 IS:13779 compliant Energy Meter with DLMS protocol
Isolator switch	:	32A / 63A Load Break Switch
Lamp protection voltage level	:	*160VAC - 275VAC Per Phase L-N
Load control capacity	:	Max. 63A / Ph
Load control component	:	Latch relay with DC coil
Output protection	:	Upto 63A MCB with 10kA short circuit rating
Rectification for nuisance MCB trips	:	Automatic Rectification
Door tamper sensing	:	Yes
Firmware update over the air	:	Yes
Precision real time clock (RTC)	:	Yes
Battery back-up for power fail	:	30 minutes
Protective features	:	Short Circuit Over/Under Voltage Over Load
Enclosure	:	IP55 & IK10 CRCA enclosure
Mounting type	:	Pole Mounting Surface Mounting with Stand
Weight	:	16 kg
Parameters measured	:	Voltage, Current, Active power, Power factor, Energy consumption, Lamp burning hours
Internal storage	:	Last 7 days telemetry data & 1 year energy consumption report
Schedule configuration	:	Predefined schedule / Astronomical clock
Functionality mode	:	Auto/Manual [6A Selector switch]
Threshold configuration	:	"Over/Under Voltage" "Over/Under Current"
Configurable parameters	:	Alarm/Protection Thersholds and Device settings*
Faults/Alarms	:	Over/Under Voltage Over/Under Current Lamp Failure Latch Failure Power Failure Meter Communication Failure
Approvals	:	NABL Lab [Functional Test EMI/EMC Test Environmental Test]



* Electrical threshold parameters like Voltage (Min/Max), Current (Min/Max), functionality parameters like slot level, RTC, scheduling (Predefined/Astronomical), live data interval time, Web server URL/Port can be configured remotely

* Configurable