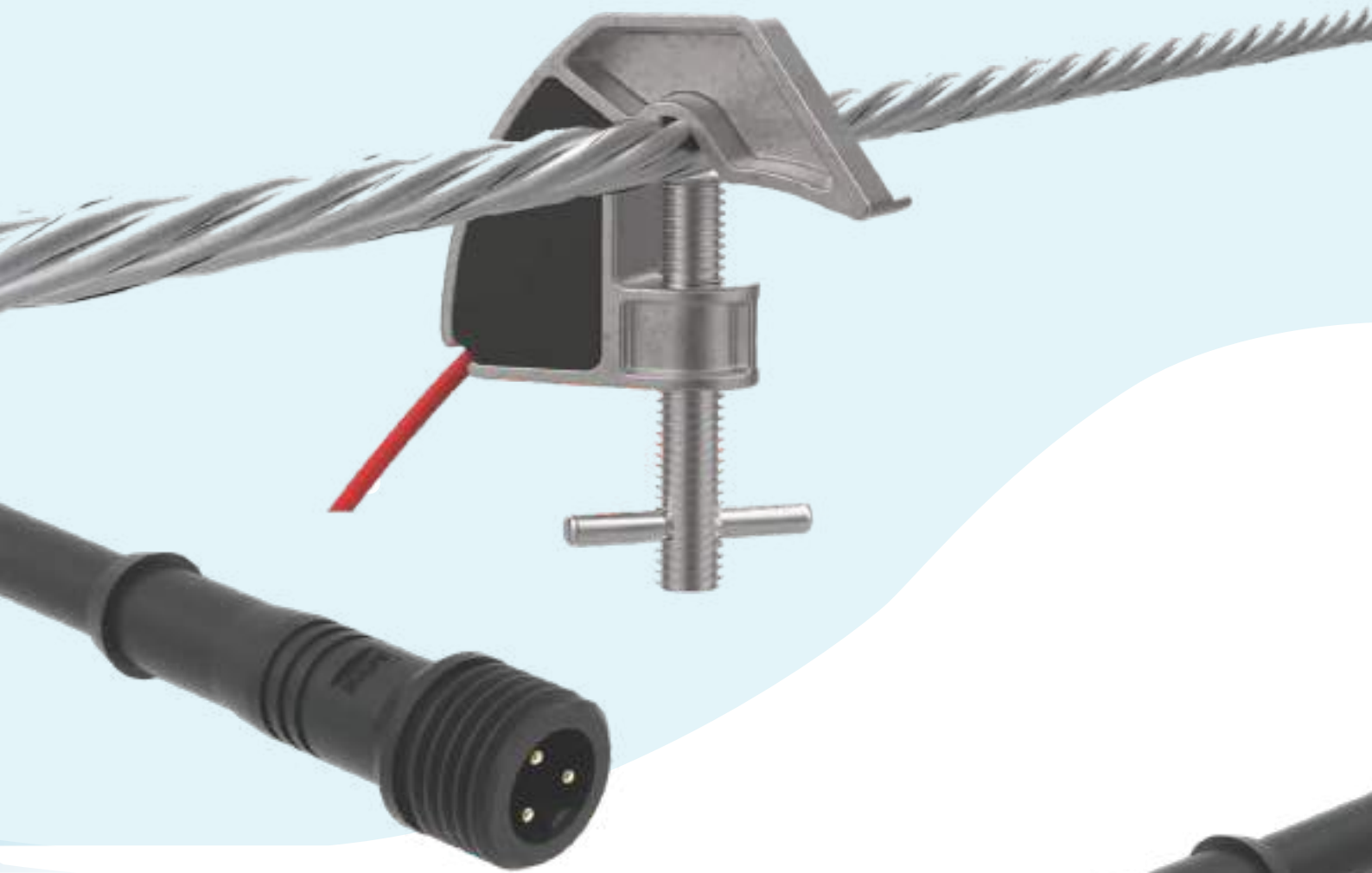




Bimetallic Hook with Waterproof Connector (BMW - Connector)



+91 95002 95005

www.schnellenergy.com

schnell@schnellenergy.com

Schnell Energy Equipments Pvt.Ltd.
6/4, Lions Club Building, Ranganayaki Nagar,
Periyanaickenpalayam, Coimbatore - 641 020.



PRODUCT DESCRIPTION

Street lights are an essential part of a country's public road infrastructure. They help to maintain high level of security and safety. So, it is very important for these lights to work with minimal downtime.

The lamp can have downtime mainly due the below mentioned factors.

- 1) Loss of power connection from the main power line
- 2) Fault of the accessories
- 3) Fault of the luminaire

As part of our continual development the following solutions were developed and tested to reduce the downtime caused due to the above issues.

Bimetal Hook Clamp



In case of the street lights the wire from the street light will be copper and the overhead street light wire will be ACSR (Aluminum conductor Steel reinforced).

A common practice in India is to swirl the copper wire around the ACSR wire and tightly join the connection. But due to the galvanic corrosion the area of contact will slowly start to degrade in conduction due to a layer of oxide formation and eventually start to heat and burn the wire.

The galvanic corrosion occurs when two (or more) dissimilar metals are brought into electrical contact in the presence of moisture. This will cause a layer of oxide the area of contact and cause the conduction level to decrease.

As a robust solution to this problem, we have invented the Bimetal clamp with water proof connector.

The device has an aluminum body with copper wire connected to the body and Isolated from atmospheric conditions using a stable encapsulant compound.

As a result of this unique design the connection between the ACSR and connection from the street light will be two similar metals and thus it will not cause any corrosion and the connection will be safe and robust over a long period.

Water Proof Connector(WPC)



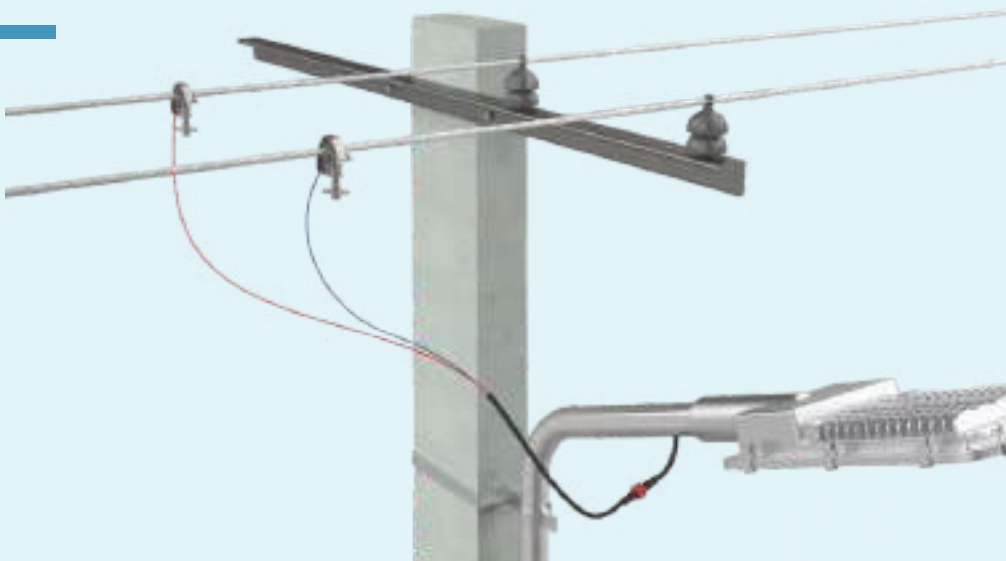
The second problem faced as mentioned above is the fault with the luminaire and the accessories attached, With the traditional methods of connection for replacing a lamp the service technician has to remove the power line connected to the overhead lamp and the remove the lamp or has to cut the wire and connect the wire again covering it with an insulation tape. This method again is very time consuming and the connection life will be very poor causing the overall connection quality and system performance would be unsatisfactory,also over the time cable as to be replaced.

To tackle this situation, we have designed and developed a water proof connector along with the bimetallic hook connector which can be mated with the suitable luminaries. This helps to easily remove the faulty luminaire and accessories to fix the new one with ease.

Technical Specifications

- Voltage Rating: 1100 V
- Current Rating : 8 A
- BIS approved 3 Core 1Sq.mm Copper Cable with PVC Sheath
- Cable length available : 2 meter, Custom length available on request
- IP Rating for the connector: IP 66

Solution Picture



Features



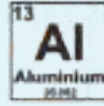
High Quality BIS approved Copper cable



IP 66 Protected Connectors suitable with LED luminaires



Compatible with specially designed set of SPD accessories



Special aluminum alloy design for long term robust performance



Easy and Safe installation with specially designed tool



Easy to use design

Advantages

- Safe installation process
- Avoid replacement of wire during maintenance
- Eliminate the use of insulation tape during installation and maintenance

Installation Tool

- The tool is designed to install the hook clamp with easy and safely
- Light weight and 1.5 meter length



Installation Process

